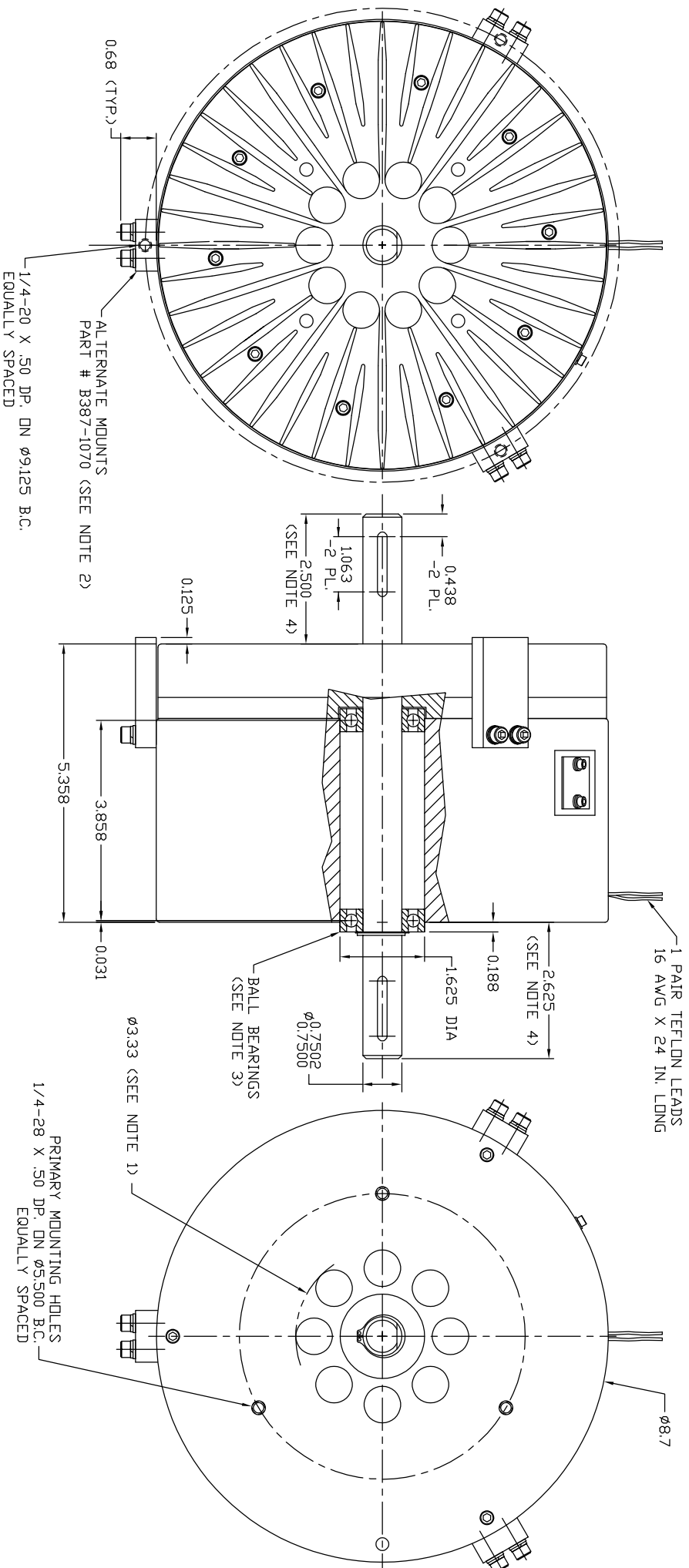


MAX. COIL CURRENT (Amps)	RESISTANCE $\pm 10\% @ 25^\circ\text{C}$ (ohms)	MAX. VOLTAGE (Vdc)	SUPPLY CURRENT (Amps)	ROTOR INERTIA (in oz s ²)	BRAKE WEIGHT (lbs.)
5.0	2.3	24	5.0	2.8	63.4



- NOTES:
1. A 3.33 INCH DIAMETER HOLE IS REQUIRED IN THE MOUNTING PLATE FOR VENTILATION PURPOSES. IF THE BRAKE IS MOUNTED ON A FLAT SURFACE IT SHOULD BE SPACED .25 IN FROM THE SURFACE.
 2. PART # B387-1070 IS AN OPTIONAL ITEM (3 PCS. REQ.) AND SHOULD BE ORDERED SEPERATELY.
 3. A 0.750 INCH BORE, ABEC 5, FAFNIR MS8KDD OR EQUIVALENT.
 4. SHAFT DIAMETER: 0.7502/0.7500 INCH. MATERIAL: 17-4 STAINLESS, RC38, 175,000 PSI.
 5. SHAFT UTILIZES A 3/16 INCH SQUARE KEY X 1.0 INCH LONG AT BOTH ENDS.

UNLESS OTHERWISE SPECIFIED:
 1. MATERIAL: 302/304 STAINLESS STEEL
 2. SURFACE FINISH: PER AMS 9130
 3. LINEAR DIMENSIONS: IN INCHES
 4. ANGULAR DIMENSIONS: PER AMS 9130
 5. FINISH: PER AMS 9130
 6. MACHINING SURFACES
 7. BREAK EDGES: ALL TO DR
 8. TOLERANCES: SEE DRAWING

THE INFORMATION DISCLOSED HEREIN IS THE EXCLUSIVE PROPERTY OF
MBS MAGNETIC BRAKE SYSTEMS
 4725 CALLE QUETZAL, CAMARILLO, CA 93012
 OR ANY COMPANY PROPRIETARY RIGHTS OF OTHERS AND IS NOT TO BE USED OR
 DISCLOSED TO OTHERS WITHOUT THE WRITTEN CONSENT OF THE ABOVE

BRAKE - MAGNETIC,
 MODEL MB-8.7

SH 1 DF 1
 387-0103B