



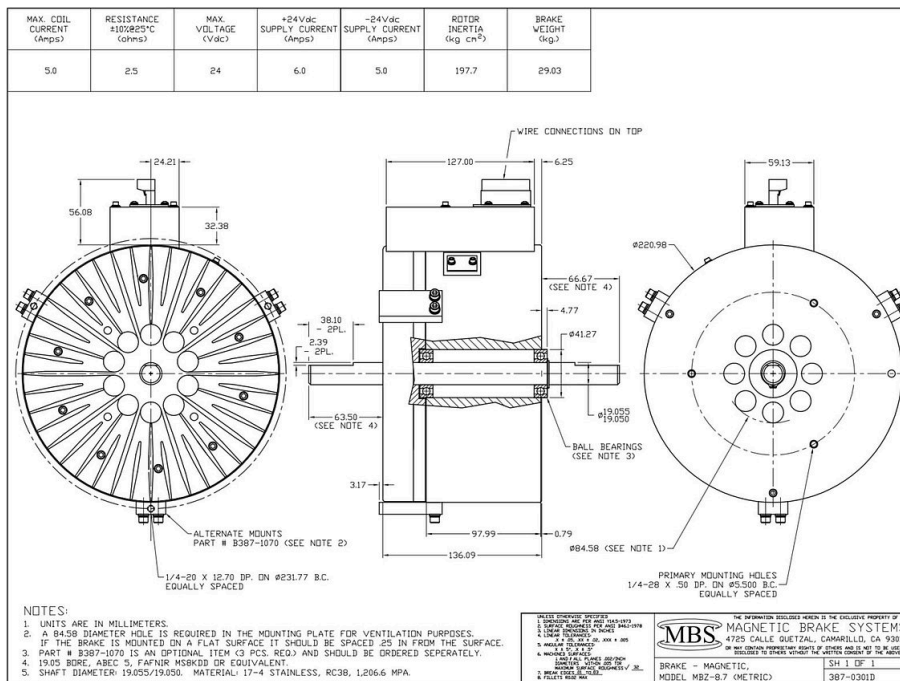


**MBZ-8.7**

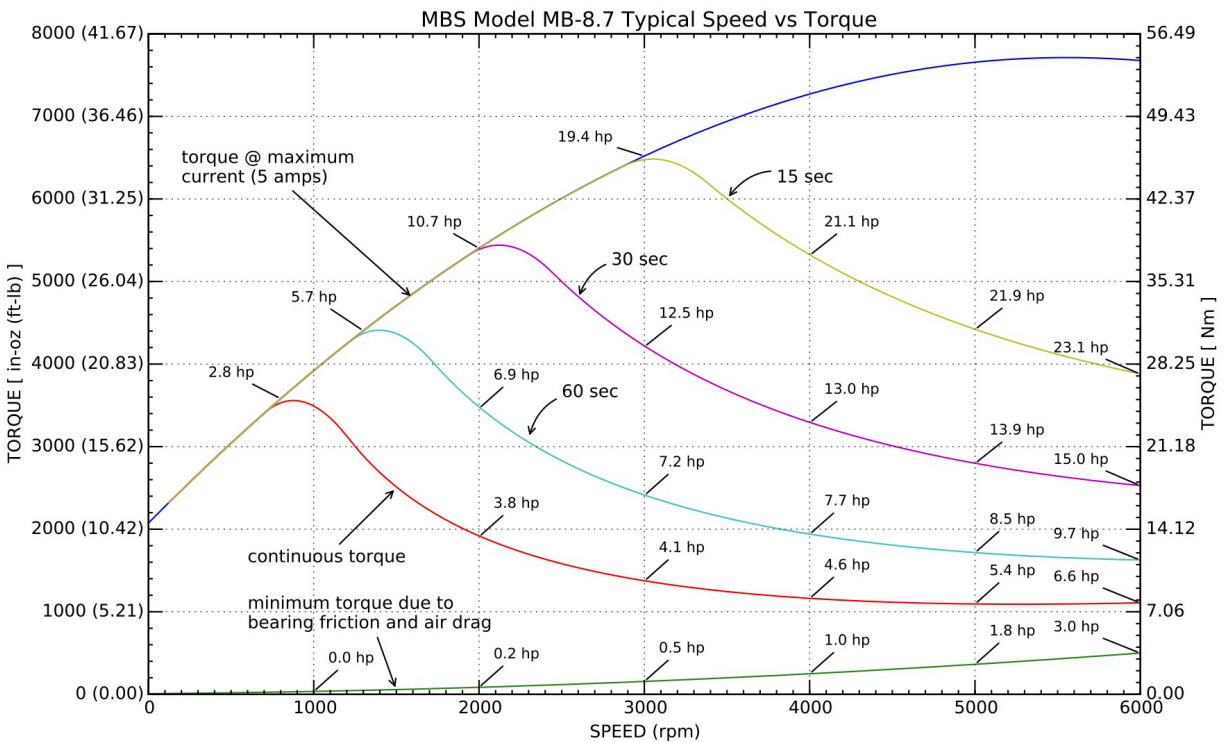
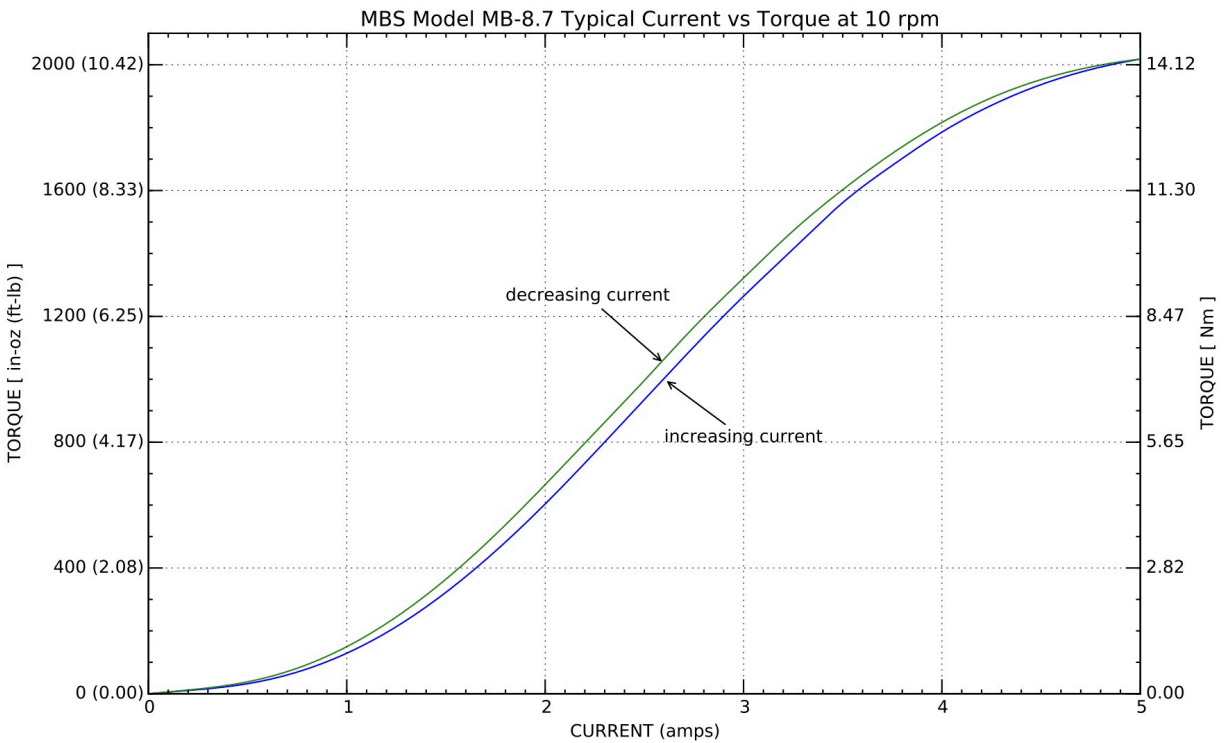
**SPECIFICATIONS - SI**

- OUTSIDE DIAMETER:** 220.98 mm
- MAX. TORQUE AT ZERO RPM:** 14.65 N·m
- MAX. TORQUE AT MAX RPM:** 54.20 N·m
- MAX. RPM:** 628.32 rad/sec
- MIN. TORQUE AT MAX RPM\*:** 3.53 N·m
- MAX. POWER @ MAX. RPM FOR 15 SEC.:** 17,214 watts
- MAX. CONTINUOUS POWER @ MAX. RPM:** 4,916 watts

\*This torque is due to air drag and bearing friction; current and cogging at zero level.



## PERFORMANCE CURVES - STANDALONE MBS BRAKE



July 2018 - Magnetic Brake Systems - [www.magbrakesystems.com](http://www.magbrakesystems.com) - tel: +1 805-383-6903

## PERFORMANCE CURVES - MBS BRAKE WITH AN MBS CONTROLLER

