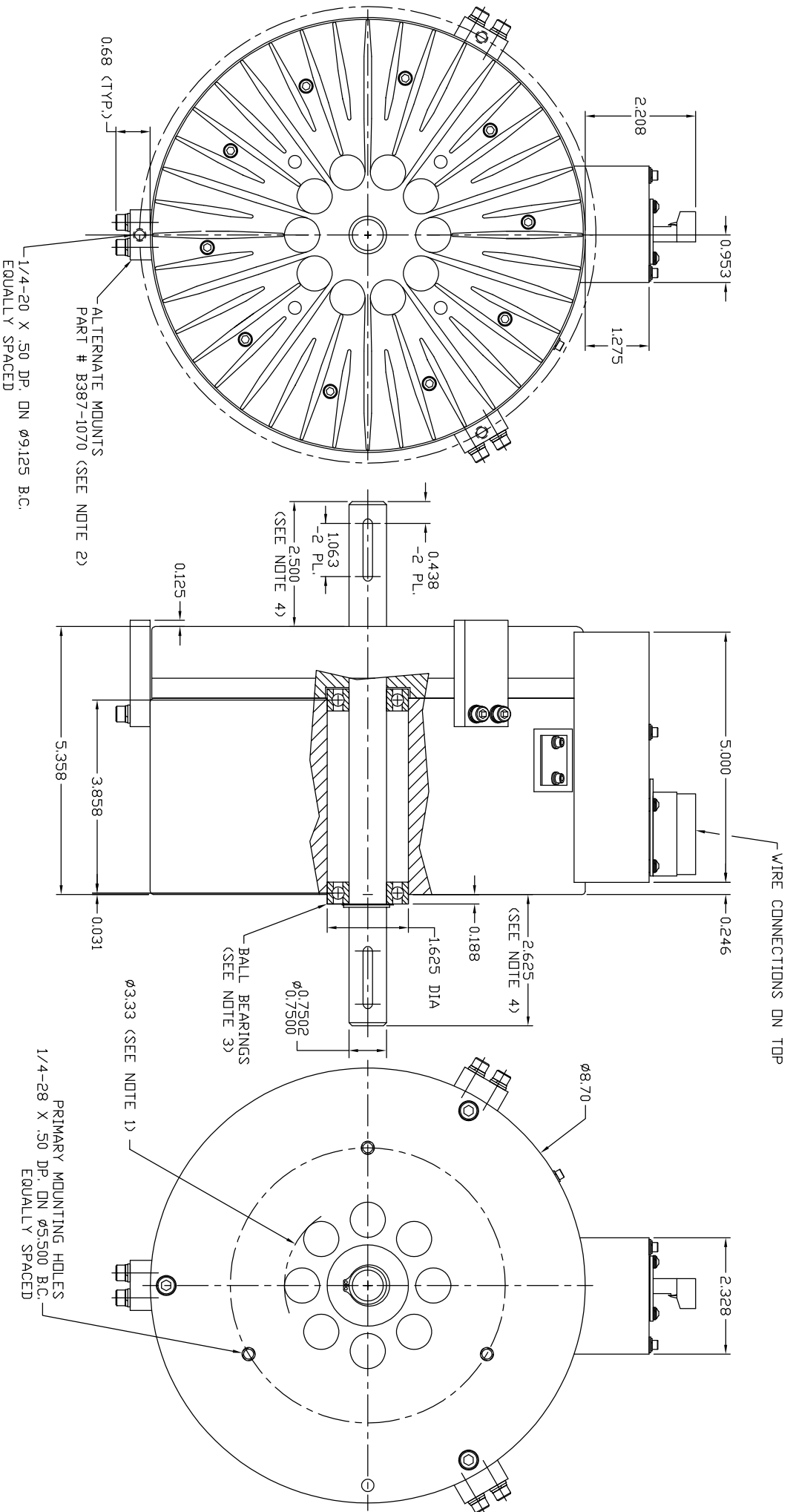


MAX. COIL CURRENT (Amps)	RESISTANCE $\pm 10\% @ 25^{\circ}\text{C}$ (Ohms)	MAX. VOLTAGE (Vdc)	+24Vdc SUPPLY CURRENT (Amps)	-24Vdc SUPPLY CURRENT (Amps)	ROTOR INERTIA (in oz s ²)	BRAKE WEIGHT (lbs.)
5.0	2.3	24	6.0	5.0	2.8	64.7



NOTES:

1. A 3.33 INCH DIAMETER HOLE IS REQUIRED IN THE MOUNTING PLATE FOR VENTILATION PURPOSES. IF THE BRAKE IS MOUNTED ON A FLAT SURFACE IT SHOULD BE SPACED .25 IN FROM THE SURFACE.
2. PART # B387-1070 IS AN OPTIONAL ITEM (3 PCS. REQ.) AND SHOULD BE ORDERED SEPARATELY.
3. A 0.750 INCH BORE, ABEC 5, FAFNIR MS8KDD OR EQUIVALENT.
4. SHAFT DIAMETER: 0.7502/0.7500 INCH. MATERIAL: 17-4 STAINLESS, RC38, 175,000 PSI.
5. SHAFT UTILIZES A 3/16 INCH SQUARE KEY X 1.0 INCH LONG AT BOTH ENDS.

UNLESS OTHERWISE SPECIFIED:
 1. MACHINING SURFACES
 2. SURFACE FINISH: 32
 3. LINEAR DIMENSIONS IN INCHES
 4. HOLE DIMENSIONS: .0015 INCH MINIMUM SURFACE FINISH
 5. ANGULAR DIMENSIONS: ± .005 INCH
 6. HOLE DIMENSIONS: ± .005 INCH
 7. BREAK EDGES: ALL TO .005 INCH
 8. TOLERANCES: SEE DRAWING

MBS THE INFORMATION DISCLOSED HEREIN IS THE EXCLUSIVE PROPERTY OF
MAGNETIC BRAKE SYSTEMS
 4725 CALLE GUETZAL, CAMARILLO, CA 93012
 OR ANY COMPANY PROPRIETARY RIGHTS OF OTHERS AND IS NOT TO BE USED OR
 DISCLOSED TO OTHERS WITHOUT THE WRITTEN CONSENT OF THE ABOVE

BRAKE - MAGNETIC,
 MODEL MBZ-8.7

SH 1 DF 1
 387-0303B