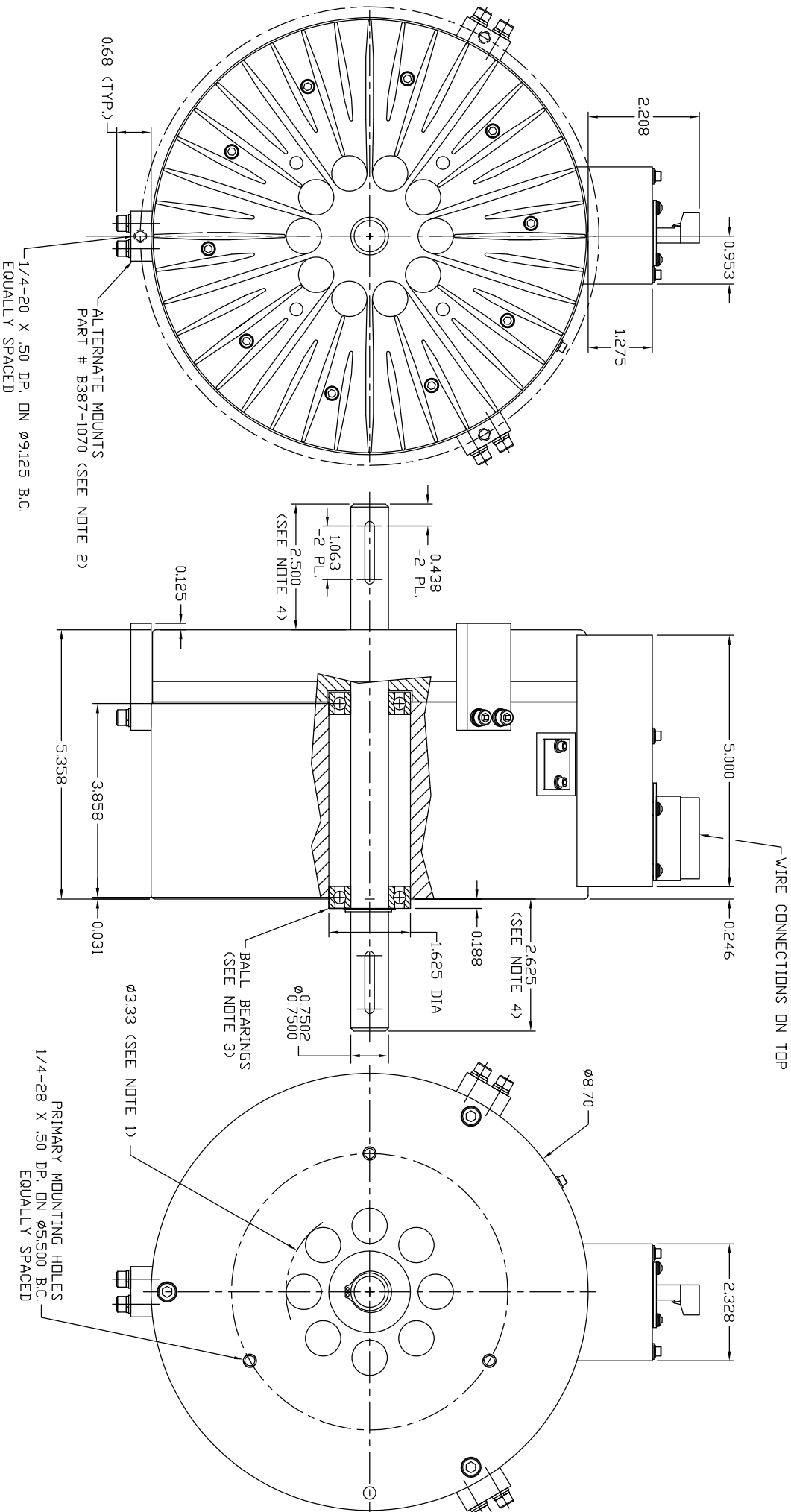


MAX. COIL CURRENT (Amps)	RESISTANCE $\pm 10\% @ 25^{\circ}\text{C}$ (Ohms)	MAX. VOLTAGE (Vdc)	+24Vdc SUPPLY CURRENT (Amps)	-24Vdc SUPPLY CURRENT (Amps)	ROTOR INERTIA (in oz s ²)	BRAKE WEIGHT (lbs.)
5.0	2.3	24	6.0	5.0	2.8	64.0



NOTES:

1. A 3.33 INCH DIAMETER HOLE IS REQUIRED IN THE MOUNTING PLATE FOR VENTILATION PURPOSES. IF THE BRAKE IS MOUNTED ON A FLAT SURFACE IT SHOULD BE SPACED .25 IN FROM THE SURFACE.
2. PART # B387-1070 IS AN OPTIONAL ITEM (3 PCS. REQ.) AND SHOULD BE ORDERED SEPARATELY.
3. A 0.750 INCH BORE, ABE C 5, FAFNIR MS8KDD OR EQUIVALENT.
4. SHAFT DIAMETER: 0.7502/0.7500 INCH. MATERIAL: 17-4 STAINLESS, RC38, 175,000 PSI.
5. SHAFT UTILIZES A 3/16 INCH SQUARE KEY X 1.0 INCH LONG AT BOTH ENDS.

UNLESS OTHERWISE SPECIFIED:
 1. MATERIAL: 302/304 STAINLESS STEEL
 2. SURFACE FINISH: PER ANSI B46.1-1978
 3. LINEAR DIMENSIONS IN INCHES
 4. ANGULAR DIMENSIONS IN DEGREES
 5. UNLESS OTHERWISE SPECIFIED, DIMENSIONS ARE TO MAXIMUM SURFACE UNLESS OTHERWISE SPECIFIED
 6. MOUNTING SURFACES
 7. BREAK EDGES ALL TO 2R
 8. TOLERANCES UNLESS OTHERWISE SPECIFIED

MBS THE INFORMATION DISCLOSED HEREIN IS THE EXCLUSIVE PROPERTY OF
MAGNETIC BRAKE SYSTEMS
 4725 CALLE QUETZAL, CAMARILLO, CA 93012
 OR MAY CONTAIN PROPRIETARY RIGHTS OF OTHERS AND IS NOT TO BE USED OR
 DISCLOSED TO OTHERS WITHOUT THE WRITTEN CONSENT OF THE ABOVE

BRAKE - MAGNETIC,
 MODEL MBL-8.7

SH 1 OF 1
 387-0203B