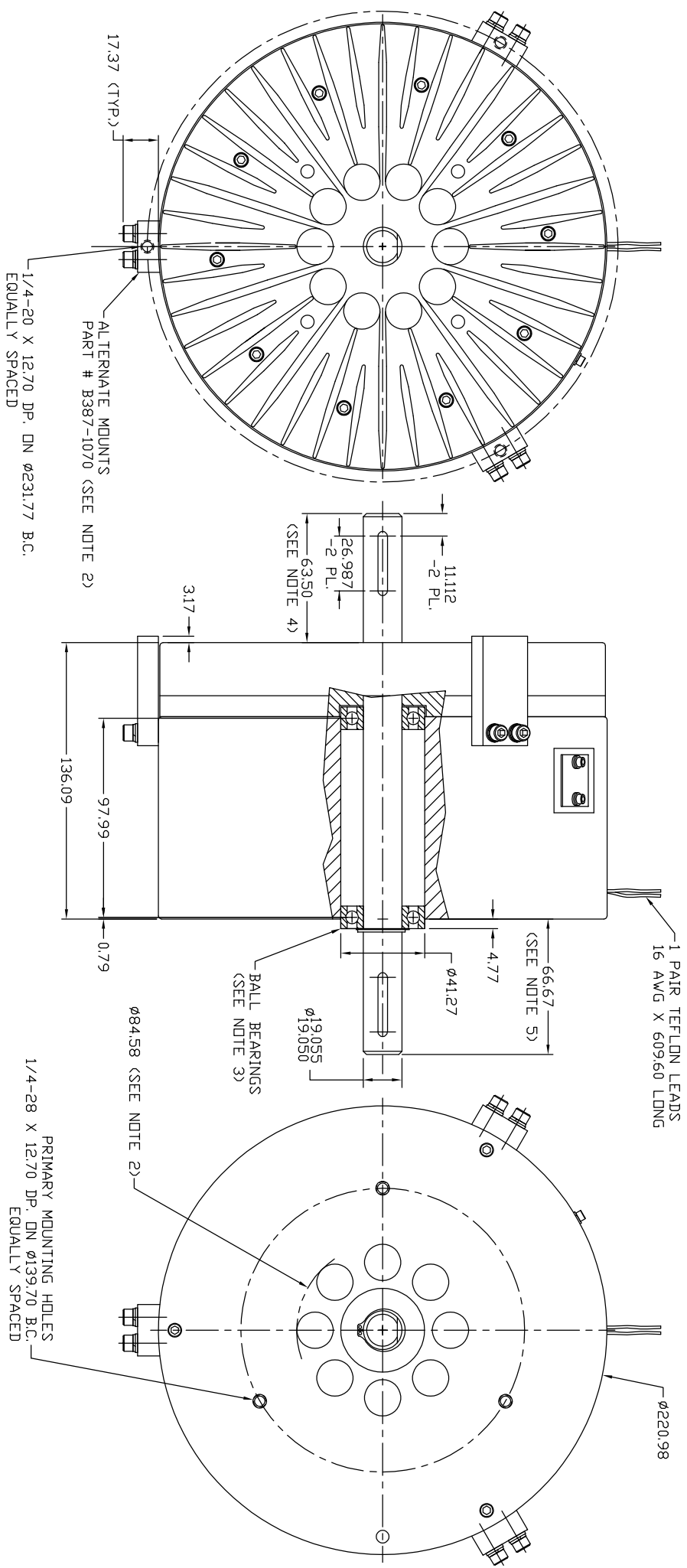


MAX. COIL CURRENT (Amps)	RESISTANCE $\pm 10\%$ @ 25°C (Ohms)	MAX. VOLTAGE (Vdc)	+24Vdc SUPPLY CURRENT (Amps)	-24Vdc SUPPLY CURRENT (Amps)	ROTOR INERTIA (kg cm ²)	BRAKE WEIGHT (kg)
5.10	2.3	24	5.0	NA	197.7	28.75



NOTES:

- UNITS ARE IN MILLIMETERS.
- A 84.58mm DIAMETER HOLE IS REQUIRED IN THE MOUNTING PLATE FOR VENTILATION PURPOSES. IF THE BRAKE IS MOUNTED ON A FLAT SURFACE IT SHOULD BE SPACED 6.35mm FROM THE SURFACE.
- PART # B387-1070 IS AN OPTIONAL ITEM (3 PCS. REQ.) AND SHOULD BE ORDERED SEPARATELY.
- A 19.05mm BORE, ABEC 5, FAFNIR MS8KDD OR EQUIVALENT.
- SHAFT DIAMETER: 19.055/19.050mm. MATERIAL: 17-4 STAINLESS. RC38, 1.206.6 MPA.
- SHAFT UTILIZES A 4.762mm (3/16") SQUARE KEY X 25.40mm (1") LONG AT BOTH ENDS.

UNLESS OTHERWISE SPECIFIED:
 1. MATERIAL: ALUMINUM 6061-T6
 2. SURFACE FINISH: PER AMS 3141-1978
 3. LINEAR DIMENSIONS IN MILLIMETERS
 4. ANGULAR DIMENSIONS IN DEGREES
 5. UNLESS OTHERWISE SPECIFIED, ALL DIMENSIONS ARE TO BE HUNDRETHS OF AN INCH
 6. UNLESS OTHERWISE SPECIFIED, ALL DIMENSIONS ARE TO BE HUNDRETHS OF AN INCH
 7. BREAK EDGES SHALL TO 2R
 8. TOLERANCES SHALL TO 2R

THE INFORMATION DISCLOSED HEREIN IS THE EXCLUSIVE PROPERTY OF
MBS MAGNETIC BRAKE SYSTEMS
 4725 CALLE GUETZAL, CAMARILLO, CA 93012
 OR MAY CONTAIN PROPRIETARY RIGHTS OF OTHERS AND IS NOT TO BE USED OR
 DISCLOSED TO OTHERS WITHOUT THE WRITTEN CONSENT OF THE ABOVE

BRAKE - MAGNETIC,
 MODEL MB-8.7 (METRIC)

SH 1 OF 1
 387-0103B