



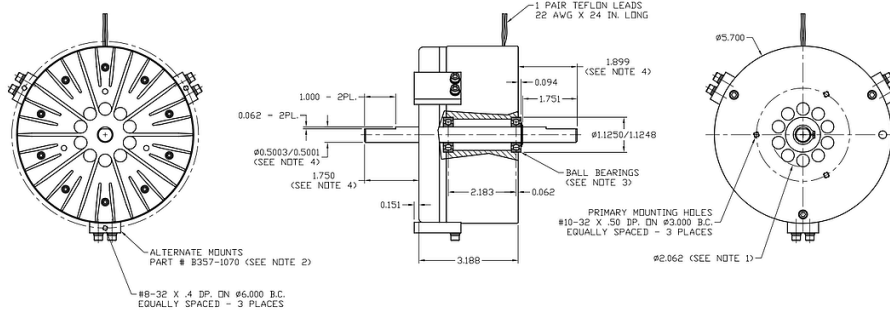
MB-5.7

SPECIFICATIONS - ENGLISH (IN-OZ and FT-LB)

OUTSIDE DIAMETER:	5.70 inches	5.70 inches
MAX. TORQUE AT ZERO RPM:	558 in-oz	2.91 ft-lb
MAX. TORQUE AT MAX RPM:	1,239 in-oz	6.45 ft-lb
MAX. RPM:	8,000 rev/min	8,000 rev/min
MIN. TORQUE AT MAX RPM*:	172 in-oz	0.90 ft-lb
MAX. POWER @ MAX. RPM FOR 15 SEC.:	5.58 hp	5.58 hp
MAX. CONTINUOUS POWER @ MAX. RPM:	3.37 hp	3.37 hp

*This torque is due to air drag and bearing friction; current and cogging at zero level.

MAX. COIL CURRENT (Amps)	RESISTANCE @100±25°C (ohms)	MAX. VOLTAGE (Vdc)	+24Vdc SUPPLY CURRENT (Amps)	-24Vdc SUPPLY CURRENT (Amps)	ROTOR INERTIA (in oz s ²)	BRAKE WEIGHT (lbs.)
5.0	2.8	24	5.0	NA	0.316	16.0



NOTES:

1. A 2.06 DIAMETER HOLE IS REQUIRED FOR VENTILATION PURPOSES. IF THE BRAKE IS MOUNTED ON A FLAT SURFACE IT SHOULD BE SPACED 0.25 INCHES FROM THE SURFACE.
2. 8357-1070 IS AN OPTIONAL ITEM (3 PCS. REQ.) AND SHOULD BE ORDERED SEPARATELY.
3. Ø0.500 BORE, ABEC 3, FAFNR SKDD OR EQUIVALENT.
4. DIMENSIONS SHOWN ARE FOR THE STOCK SHAFT WITH ONE FLAT ON EACH END. CUSTOMER MAY REQUEST SHAFT WITH KEYWAYS. SHAFT MATERIAL: 17-4 PH STAINLESS, RC 38, 175,000 PSI.
5. ROTOR INERTIA INCLUDES THE SHAFT, IMPELLER AND DRAG RING.

ALL DIMENSIONS UNLESS OTHERWISE SPECIFIED:
 1. UNLESS NOTED, ALL DIMENSIONS ARE TO BE HIDDEN DIMENSIONS.
 2. UNLESS NOTED, ALL DIMENSIONS ARE TO BE SHOWN DIMENSIONS.
 3. UNLESS NOTED, ALL DIMENSIONS ARE TO BE SHOWN DIMENSIONS.
 4. UNLESS NOTED, ALL DIMENSIONS ARE TO BE SHOWN DIMENSIONS.
 5. UNLESS NOTED, ALL DIMENSIONS ARE TO BE SHOWN DIMENSIONS.
 6. UNLESS NOTED, ALL DIMENSIONS ARE TO BE SHOWN DIMENSIONS.



THE INFORMATION CONTAINED HEREIN IS THE EXCLUSIVE PROPERTY OF
MAGNETIC BRAKE SYSTEMS
 4725 CALLE QUETZAL, CAMARILLO, CA 93012
 ON THE ORIGINAL MANUFACTURED PARTS OF THIS UNIT NO PART IS TO BE USED OR
 REPRODUCED IN ANY MANNER WITHOUT THE WRITTEN CONSENT OF THE MANUFACTURER.
 BRAKE - MAGNETIC, MODEL MB-5.7

SH 1 OF 1
 357-0100



MB-5.7

SPECIFICATIONS - SI

- OUTSIDE DIAMETER:** 144.78 mm
- MAX. TORQUE AT ZERO RPM:** 3.94 N·m
- MAX. TORQUE AT MAX RPM:** 8.75 N·m
- MAX. RPM:** 837.76 rad/sec
- MIN. TORQUE AT MAX RPM*:** 1.21 N·m
- MAX. POWER @ MAX. RPM FOR 15 SEC.:** 4,164 watts
- MAX. CONTINUOUS POWER @ MAX. RPM:** 2,515 watts

*This torque is due to air drag and bearing friction; current and cogging at zero level.

MAX. COIL CURRENT (Amps)	RESISTANCE @105±25°C (ohms)	MAX. VOLTAGE (Vdc)	+24Vdc SUPPLY CURRENT (Amps)	-24Vdc SUPPLY CURRENT (Amps)	ROTOR INERTIA (kg·cm²)	BRAKE WEIGHT (kg)
5.0	2.8	24	5.0	NA	22.3	7.26

NOTES:

- UNITS ARE IN MILLIMETERS.
- A Ø2.37 DIAMETER HOLE IS REQUIRED FOR VENTILATION PURPOSES.
- IF THE BRAKE IS MOUNTED ON A FLAT SURFACE IT SHOULD BE SPACED 6.35MM FROM THE SURFACE.
- PART # B225-1070 IS AN OPTIONAL ITEM (3 PCS. REQ.) AND SHOULD BE ORDERED SEPARATELY.
- 12.70 BORE, ABEC 5, F47090 STKRD OR EQUIVALENT.
- DIMENSIONS SHOWN ARE FOR THE STOCK SHAFT WITH ONE FLAT ON EACH END. CUSTOMER MAY REQUEST SHAFT WITH KEYWAYS. SHAFT MATERIAL: 17-4 STAINLESS, RC 38, 1,206.6 MPa.

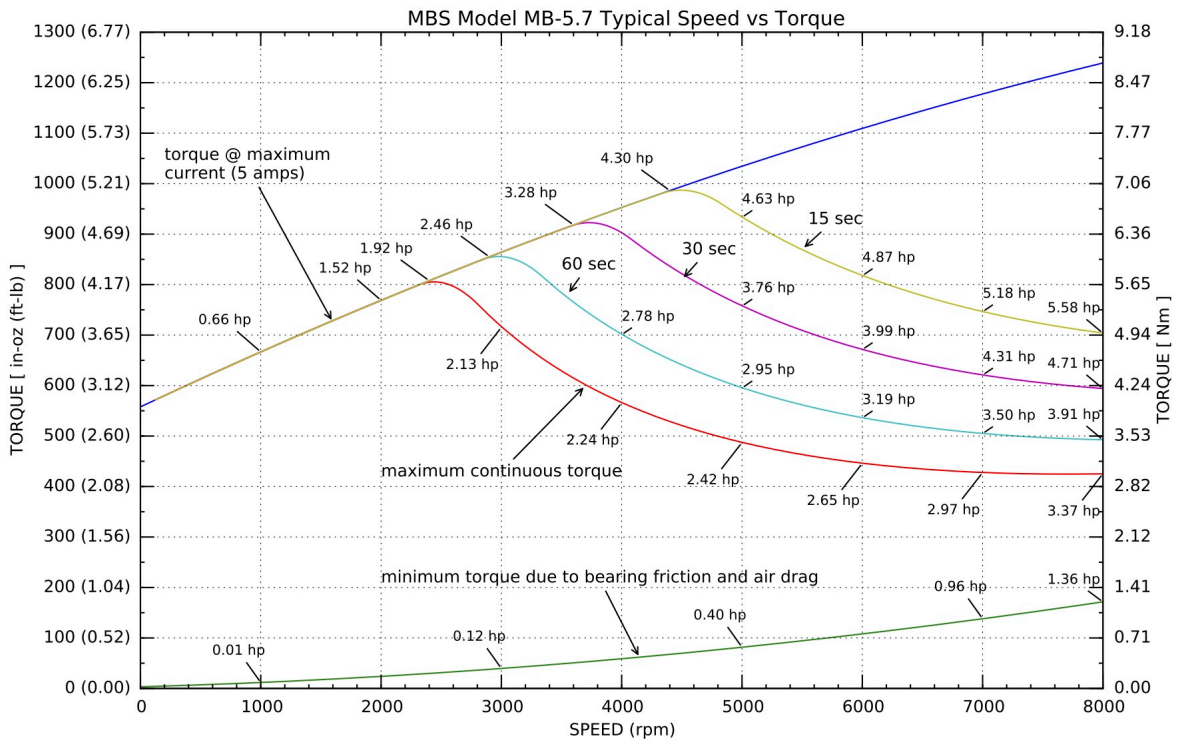
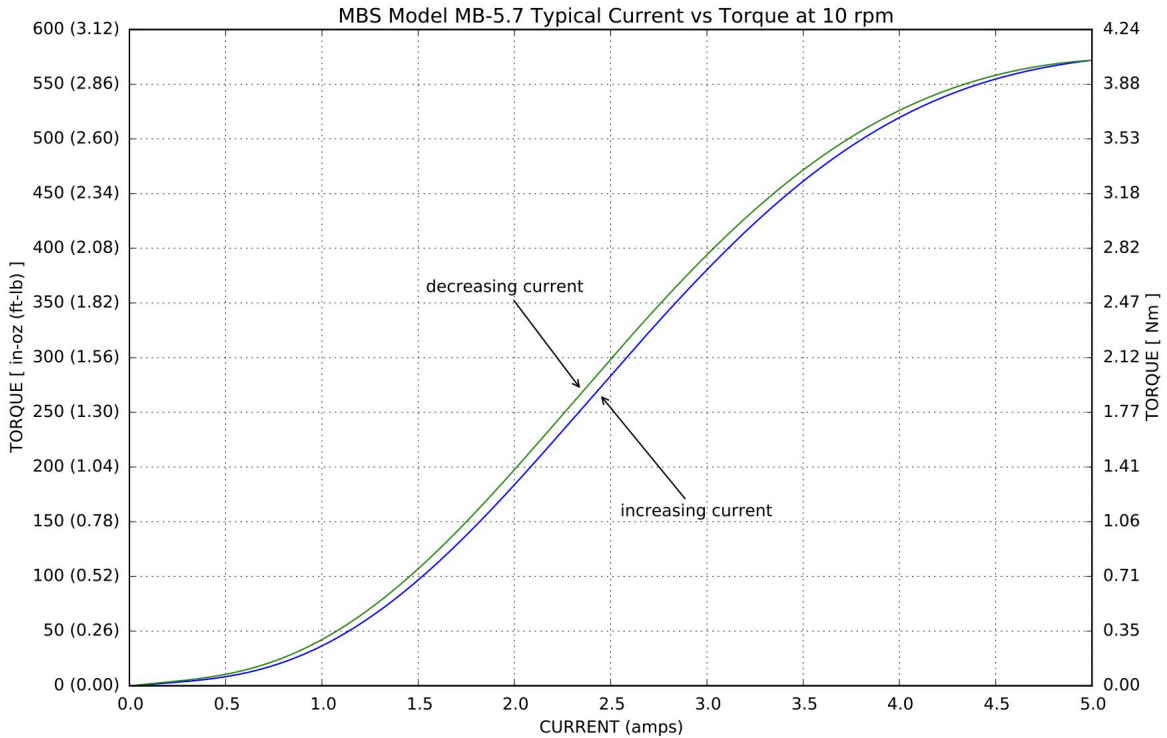
TECHNICAL SPECIFICATIONS:

- 1. TYPICAL WEIGHT: 7.26 KG
- 2. LENGTH: 80.97 MM
- 3. MOUNTING HOLES: Ø10.32 X 12.70 DP, ON Ø76.20 B.C. EQUALLY SPACED - 3 PLACES
- 4. MOUNTING HOLES: Ø52.37 (SEE NOTE 2)
- 5. BALL BEARINGS (SEE NOTE 4)
- 6. PRIMARY MOUNTING HOLES: Ø10.32 X 12.70 DP, ON Ø76.20 B.C. EQUALLY SPACED - 3 PLACES
- 7. ROTOR INERTIA: 22.3 KG·CM²
- 8. MAX. TORQUE AT ZERO RPM: 3.94 N·M
- 9. MAX. TORQUE AT MAX RPM: 8.75 N·M
- 10. MAX. RPM: 837.76 RAD/SEC
- 11. MIN. TORQUE AT MAX RPM: 1.21 N·M
- 12. MAX. POWER @ MAX. RPM FOR 15 SEC.: 4,164 WATTS
- 13. MAX. CONTINUOUS POWER @ MAX. RPM: 2,515 WATTS
- 14. SUPPLY CURRENT: 5.0 AMP (DC)
- 15. RESISTANCE @ 105±25°C: 2.8 OHMS
- 16. MAX. VOLTAGE: 24 VDC
- 17. COIL CURRENT: 5.0 AMP (DC)
- 18. MOUNTING HOLES: Ø10.32 X 12.70 DP, ON Ø76.20 B.C. EQUALLY SPACED - 3 PLACES
- 19. BALL BEARINGS (SEE NOTE 4)
- 20. PRIMARY MOUNTING HOLES: Ø10.32 X 12.70 DP, ON Ø76.20 B.C. EQUALLY SPACED - 3 PLACES
- 21. ROTOR INERTIA: 22.3 KG·CM²
- 22. MAX. TORQUE AT ZERO RPM: 3.94 N·M
- 23. MAX. TORQUE AT MAX RPM: 8.75 N·M
- 24. MAX. RPM: 837.76 RAD/SEC
- 25. MIN. TORQUE AT MAX RPM: 1.21 N·M
- 26. MAX. POWER @ MAX. RPM FOR 15 SEC.: 4,164 WATTS
- 27. MAX. CONTINUOUS POWER @ MAX. RPM: 2,515 WATTS
- 28. SUPPLY CURRENT: 5.0 AMP (DC)
- 29. RESISTANCE @ 105±25°C: 2.8 OHMS
- 30. MAX. VOLTAGE: 24 VDC
- 31. COIL CURRENT: 5.0 AMP (DC)

MBS MAGNETIC BRAKE SYSTEMS
 4725 CALLE GUSTAZA, CAMARILLO, CA 94922
 OR VISIT OUR WEBSITE: WWW.MBS-USA.COM

BRAKE - MAGNETIC, MODEL MB-5.7 (METRIC) SH 1 OF 1 357-0100

PERFORMANCE CURVES - STANDALONE MBS BRAKE



July 2018 - Magnetic Brake Systems - <http://www.magbrakesystems.com> - tel: +1 805-383-6903