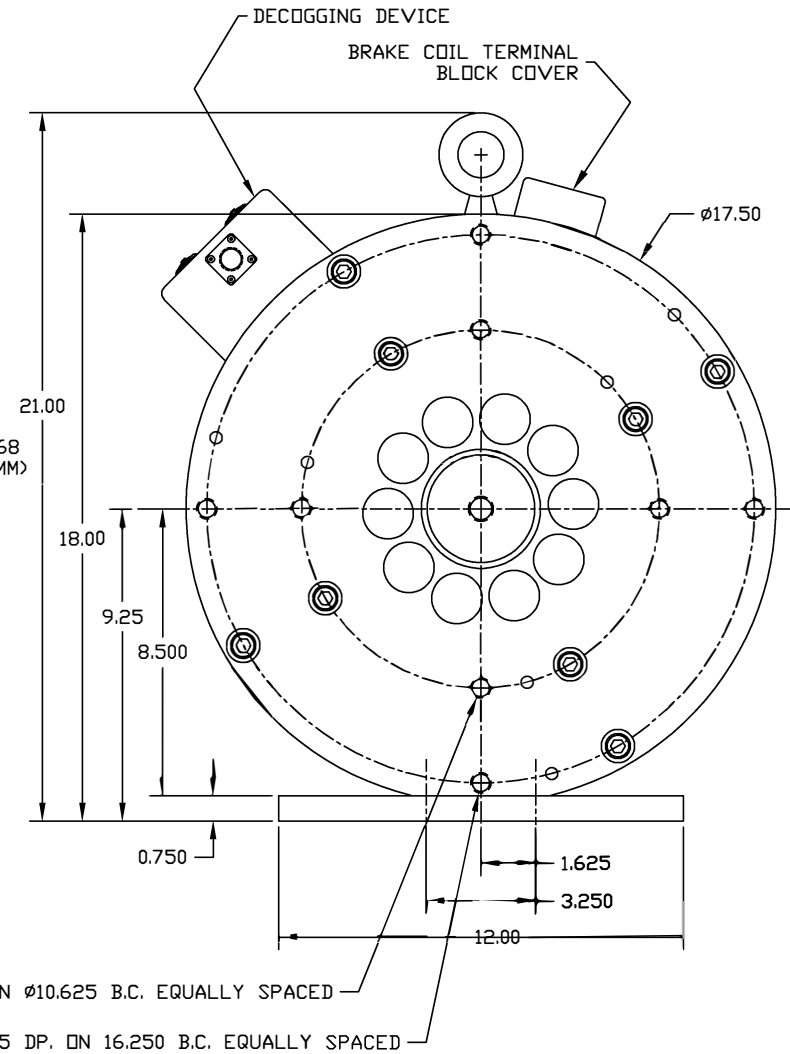
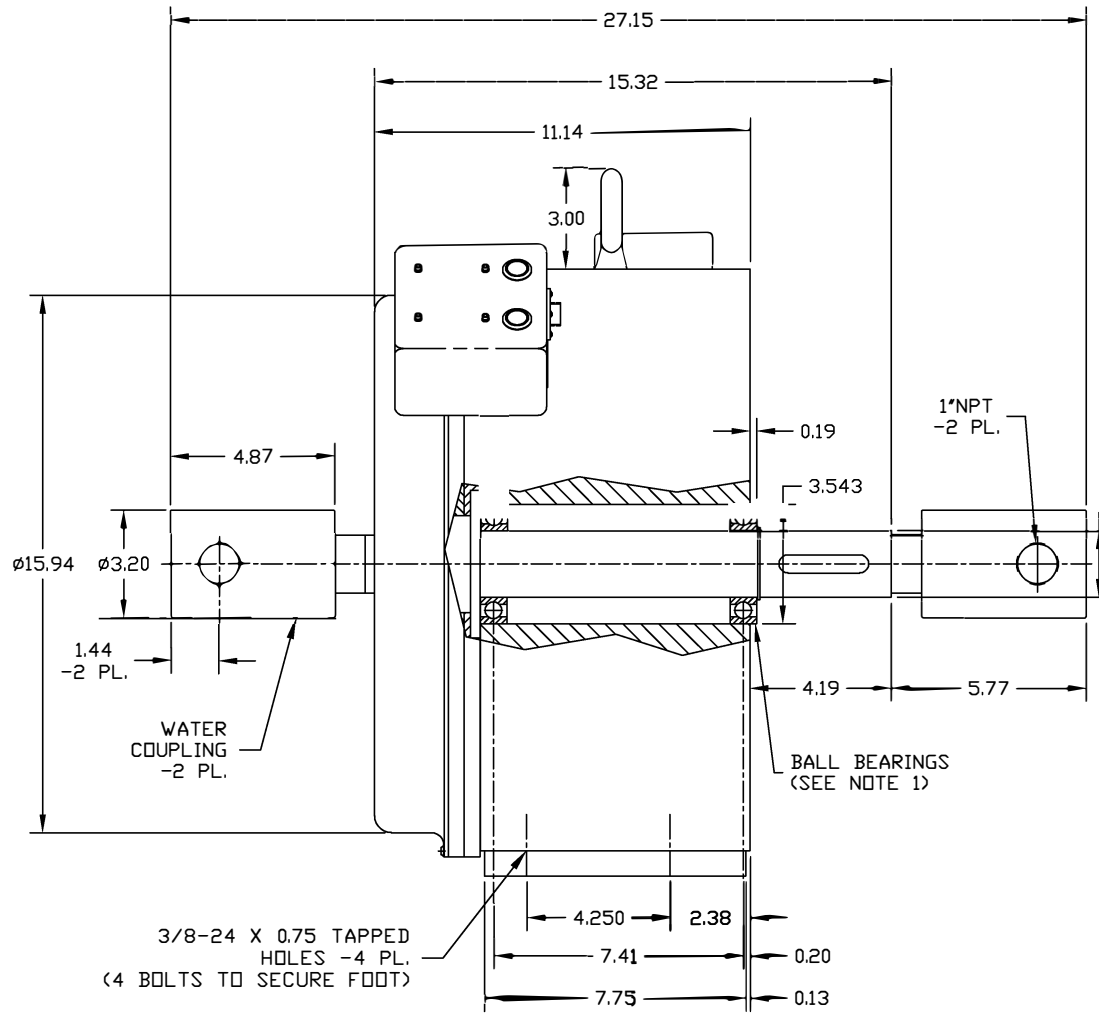


MAX. COIL CURRENT (Amps)	RESISTANCE $\pm 10\%$ @25°C (ohms)	MAX. VOLTAGE (Vdc)	+24Vdc SUPPLY CURRENT (Amps)	-24Vdc SUPPLY CURRENT (Amps)	ROTOR INERTIA (In oz s ²)	BRAKE WEIGHT (lbs.)
5.0	4.3	24	6.0	5.0	~128	510



NOTES:

- 50MM BORE, ABEC 1, KBC 6210ZZ OR EQUIVALENT.
- SHAFT DIAMETER: 1.9686/1.9683; MATERIAL: 17-4 STAINLESS, RC38, 175,000 PSI.
- WATER COUPLINGS SCREW INTO SHAFT ENDS WITH 1.5"-12-2A x 0.75 DEEP THREADS. EACH COUPLING HAS ONE 1" NPT INLET ON THE SIDE AND ONE 3/4" NPT ON THE END.
- SHAFT ACCEPTS 14MM X 9MM x 5 MM LG. KEY.

UNLESS OTHERWISE SPECIFIED
 1. DIMENSIONS ARE PER ANSI Y14.5-1973
 2. SURFACE ROUGHNESS PER ANSI B46.1-1978
 3. LINEAR DIMENSIONS IN INCHES
 4. LINEAR TOLERANCES:
 .X ± .05, .XX ± .02, .XXX ± .005
 5. ANGULAR TOLERANCES:
 ° ± .5°, XX ± .5°
 6. MACHINED SURFACES:
 1 AND 1 ALL PLANES .002/INCH
 DIAMETERS WITHIN .005 TOR
 MAXIMUM SURFACE ROUGHNESS $\sqrt{32}$
 7. BREAK EDGES .01 TO .03
 8. FILLETS R0.25 MAX



THE INFORMATION DISCLOSED HEREIN IS THE EXCLUSIVE PROPERTY OF
MAGNETIC BRAKE SYSTEMS
 4725 CALLE QUETZAL, CAMARILLO, CA 93012
 OR MAY CONTAIN PROPRIETARY RIGHTS OF OTHERS AND IS NOT TO BE USED OR
 DISCLOSED TO OTHERS WITHOUT THE WRITTEN CONSENT OF THE ABOVE

BRAKE - MAGNETIC,
 MODEL MBZ-17.5W

SH 1 OF 1
 3175-0350A