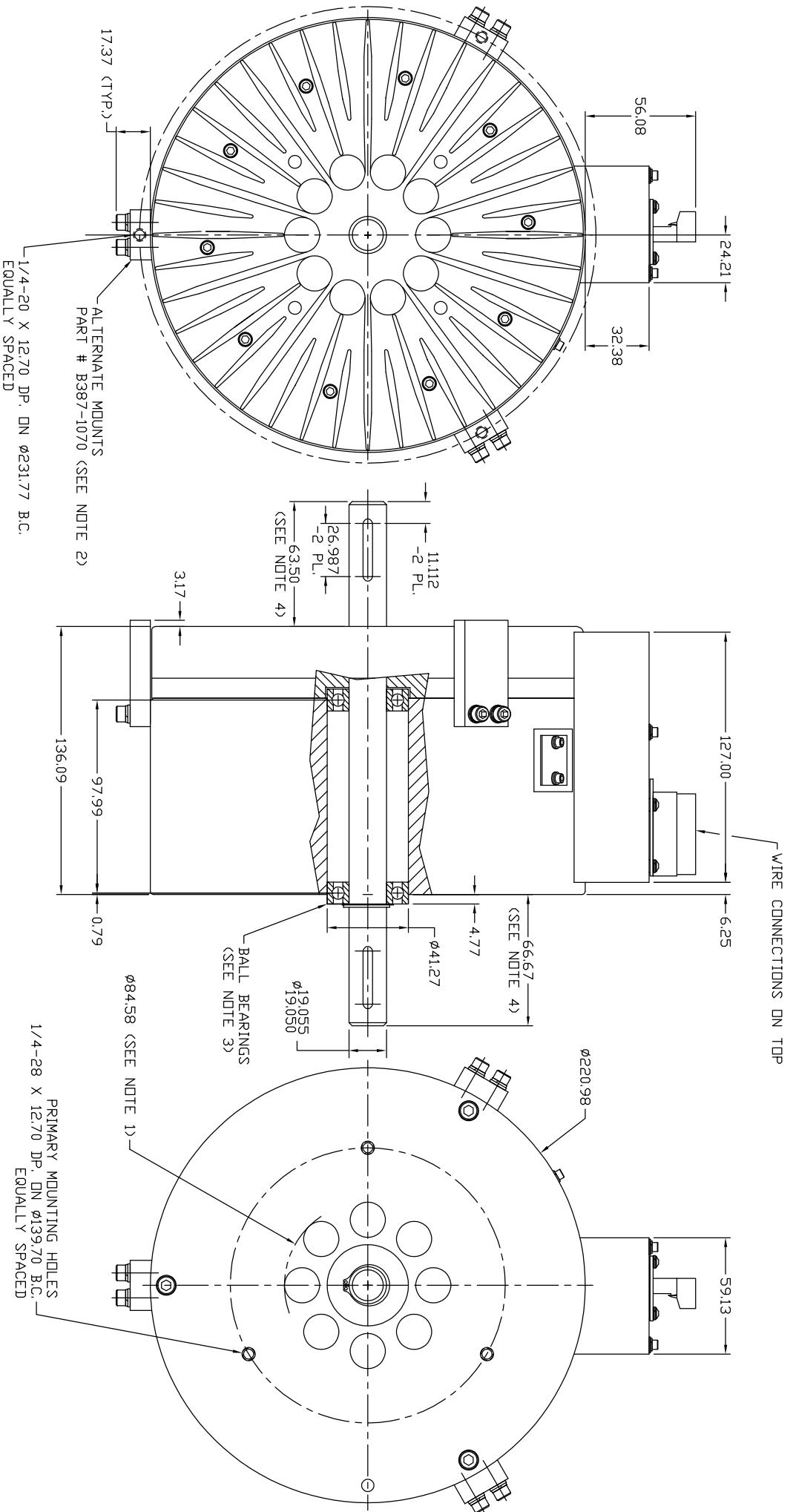


MAX. COIL CURRENT (Amps)	RESISTANCE $\pm 10\%$ @ 25°C (Ohms)	MAX. VOLTAGE (Vdc)	+24Vdc SUPPLY CURRENT (Amps)	-24Vdc SUPPLY CURRENT (Amps)	ROTOR INERTIA (kg cm ²)	BRAKE WEIGHT (kg)
5.0	2.3	24	6.0	5.0	197.7	29.03



NOTES:

- UNITS ARE IN MILLIMETERS.
- A 84.58mm DIAMETER HOLE IS REQUIRED IN THE MOUNTING PLATE FOR VENTILATION PURPOSES. IF THE BRAKE IS MOUNTED ON A FLAT SURFACE IT SHOULD BE SPACED 6.35mm FROM THE SURFACE.
- PART # B387-1070 IS AN OPTIONAL ITEM (3 PCS. REQ.) AND SHOULD BE ORDERED SEPARATELY.
- A 19.05mm BORE, ABEC 5, FAFNIR MS8KDD OR EQUIVALENT.
- SHAFT DIAMETER: 19.055/19.050mm. MATERIAL: 17-4 STAINLESS, RC38, 1.2066 MPA.
- SHAFT UTILIZES A 4.762mm (3/16") SQUARE KEY X 25.40mm (1") LONG AT BOTH ENDS.

UNLESS OTHERWISE SPECIFIED:
 1. M4-5-1973
 2. SURFACE FINISH PER ANSI B46.1-1978
 3. LINEAR DIMENSIONS IN INCHES
 4. SURFACE FINISH PER ANSI B46.1-1978
 5. ANGULAR DIMENSIONS IN DEGREES
 6. MACHINED SURFACES
 7. BREAK EDGES ALL TO 2R
 8. TOLERANCES UNLESS OTHERWISE SPECIFIED

THE INFORMATION DISCLOSED HEREIN IS THE EXCLUSIVE PROPERTY OF
MBS MAGNETIC BRAKE SYSTEMS
 4725 CALLE GUETZAL, CAMARILLO, CA 93012
 OR MAY CONTAIN PROPRIETARY RIGHTS OF OTHERS AND IS NOT TO BE USED OR
 DISCLOSED TO OTHERS WITHOUT THE WRITTEN CONSENT OF THE ABOVE

BRAKE - MAGNETIC,
 MODEL MBL-8.7 (METRIC)

SH 1 DF 1
 387-0203B